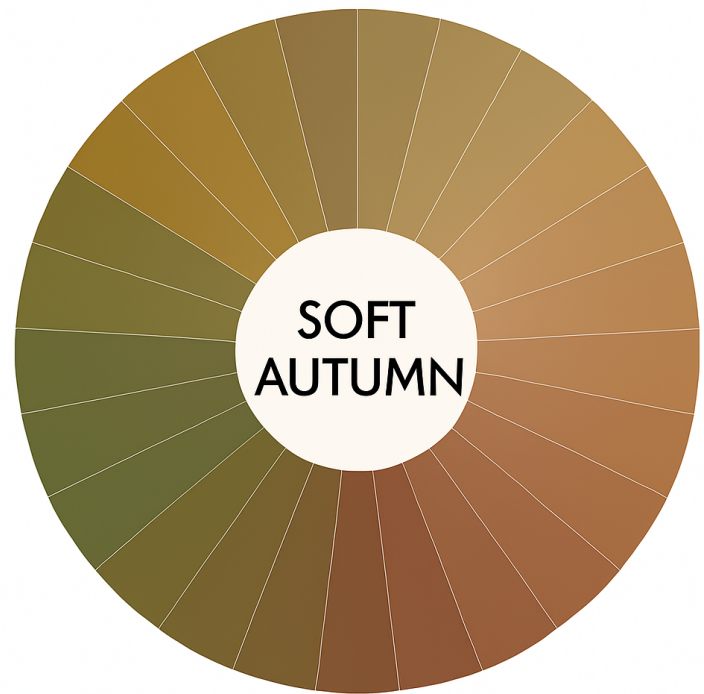




*Beauty Made Simple.
Confidence Made Real.*

Color Assessment - Soft Autumn



What 'Season' Means

A color season reflects the tones, temperature, and harmony that naturally complement your skin, hair, and eyes.

Chroma • Value • Temperature

Chroma = clarity or softness.

Value = lightness or depth.

Temperature = warm/cool.

Makeup Notes For this Season:

When you think of Autumn Seasons, think of a warm Fall Afternoon! Autumns get to wear both highlighter and bronzer. Lots of deep rich colors, also still muted like a Summer Season. No harsh lines, soft and hazy. Mix matte and shimmer together. Specific to a SOFT AUTUMN - All the wonderful rust reds, cranberry shades, olives, khakis, burnt orange & golden yellows with clouds over top - everything is soft, smudged, and muted!